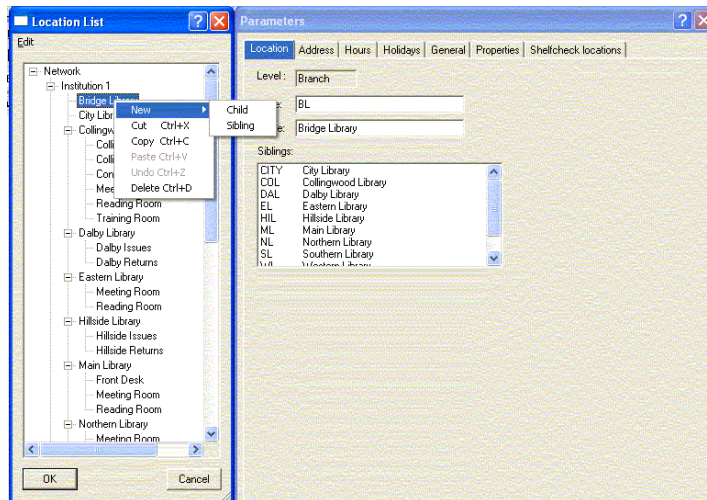


Sub-locations within a branch

In Spydus you can now specify sub-locations within a branch.

For example, you might want to hold items in a reading room and so specify the room as a sub-location within a branch.

Select the branch where you want to add a sub-location, right-click, point to **New** and click **Child**.



On the **Properties** tab there is an added a parameter called **Item location**. Set this to Yes if the sub-location is one where items are to be held.