

Fixture Libraries Explained

A “fixture library” (also known variously as a “Fixture Personality”, “Fixture Template” etc) contains information for the lighting console about the features in a moving light, so the individual controls on the console are mapped to the correct DMX channels in the light.

As new automated fixtures are released almost daily the demand to keep updating these files is increasing.

What are Fixture Libraries?

Lighting consoles communicate with moving lights using DMX channels, where each channel will control part of the moving light. Different moving lights use different channels to control their parts – compare a VL2000 Spot to a VL2000 Wash in the tables below:

Function	DMX Channel
Intensity	1
Pan	2 - 3
Tilt	4 - 5
Fixed Gobo	6
Color	7
Iris	8
Edge	9
Strobe	10
Zoom	11
Rot Wheel	12
Gobo Index	13
Control	14

Function	DMX Channel
Dimmer	1
Pan	2 - 3
Tilt	4 - 5
Blue	6
Amber	7
Magenta	8
Color Wheel	9
Diffusion	10
Strobe	11
Control	12

What Consoles use Fixture Libraries?

Nearly all lighting control consoles with a dedicated moving light control section utilise fixture libraries to make patching and control of moving lights easier.

In the JANDS product range these include:

- Vista
- Event 416 & Event 408
- Hog 1000 & Hog 500
- Legacy products:
Echelon 1K, Jandshog 600, Jandshog 500 & Jandshog 250

In the ETC range, consoles using fixture libraries include:

- Eos & Ion
- Congo & Congo Jr
- Smartfade ML
- Expression, Express & Emphasis
- Legacy products: Obsession and Obsession II

If the fixture I am using is not included in the on-board library in my console, how can I create a new library file?

The detailed answer to this question differs depending on the console you are using.

Some consoles have the ability to create new fixture libraries from an on-board or PC based editor, while for others it is a matter of downloading them from the manufacturer’s website and pasting them into your existing library files.

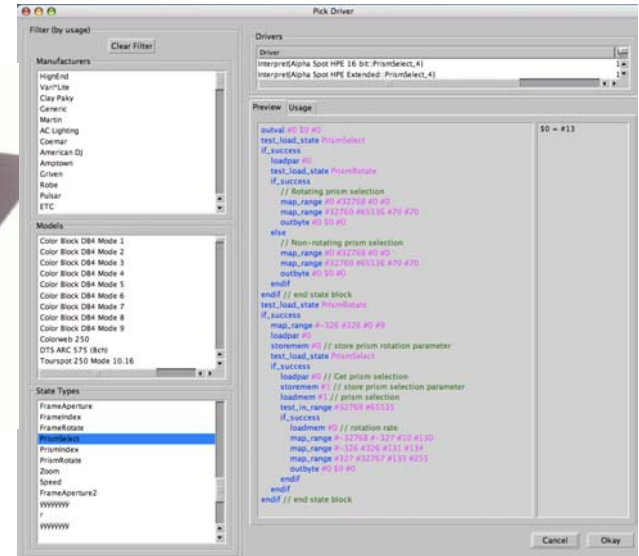
Some newer consoles such as the JANDS VISTA range use libraries in a different way whereby colour, beam and position information is stored as generic values rather than DMX information. In these cases the library acts more like a driver such as the printer drivers you use on your PC that interpret this generic information and apply it to each individual fixture in a way that will produce the same result no matter which fixture is used.

Due to the complexity of these files, the only way to source these libraries is by contacting the support team for that product, and provide them with the DMX mapping information for the fixture you wish to use. They will then generate the relevant files for you.

Set out below is the procedure for each of the consoles in the JANDS and ETC ranges:

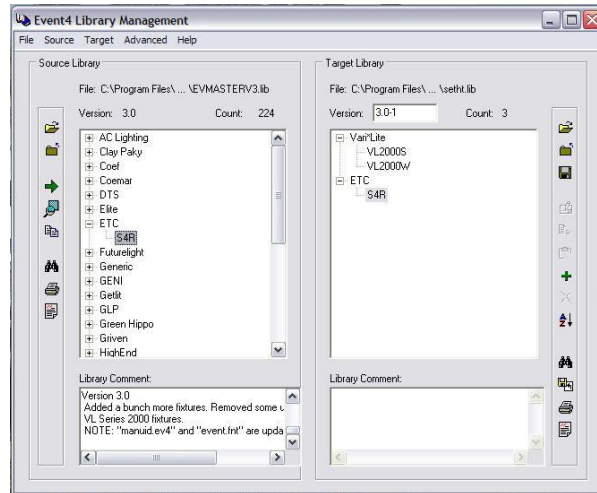
Vista Fixture Libraries

- There is an extensive onboard fixture library in Vista including a 'Main' and 'Pre-release' library.
- New fixture libraries can only be obtained from Jands, due to the complexity of the files – Please contact support@jandsvista.com



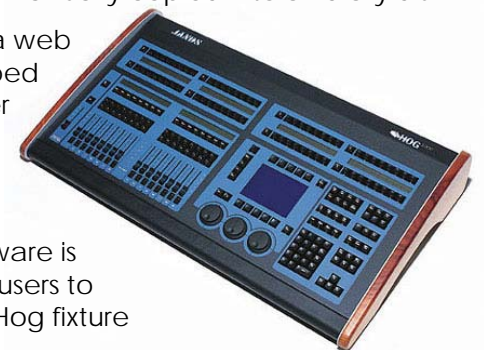
Event 4 Fixture Libraries

- Event 4 fixture libraries are maintained and generated using the Event 4 Library Editor PC application.
- A library disk can be created from a 'master library' of over 200 fixtures, or quickly made from scratch – note the master library cannot be loaded directly in a console!
- The application is available for download from www.jands.com.au. Click on the Support link, then Downloads > Software
- Libraries are loaded into the console via floppy disk



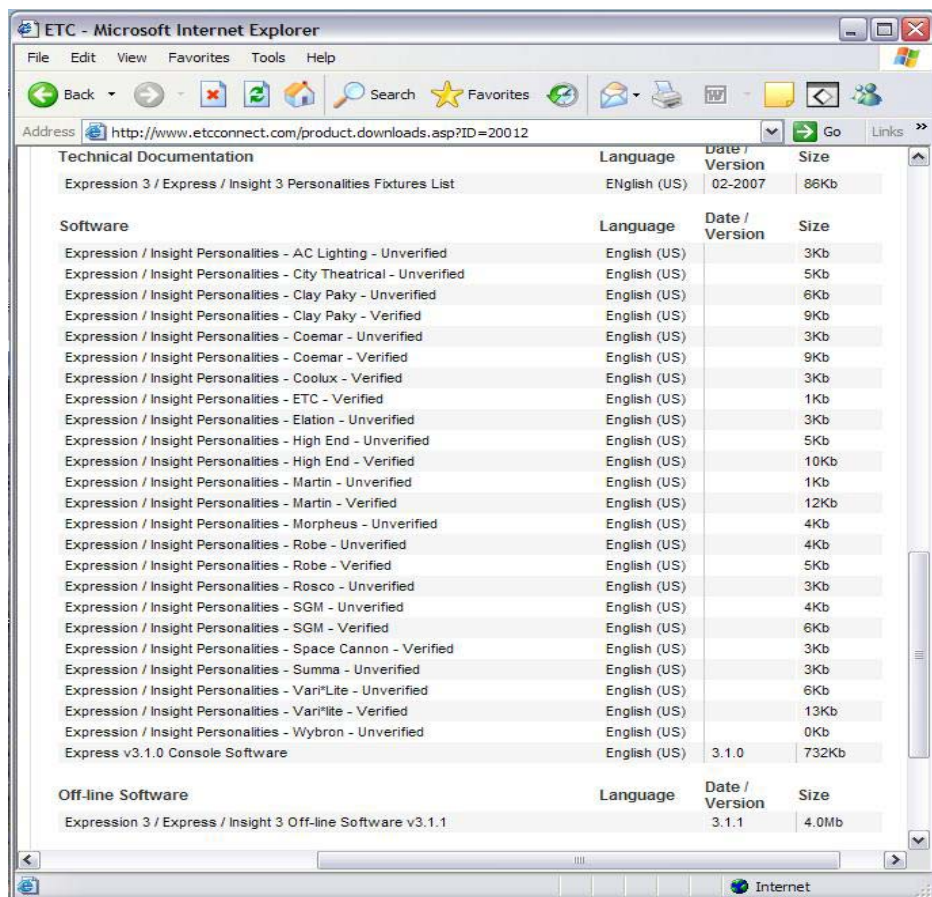
Hog Fixture Libraries?

- All Wholehog II OS consoles use the same library format – Hog 1000, Hog 500, Echelon 1K, Jandshog 600, Jandshog 500 & Jandshog 250
- Echelon 1K and later include an onboard 'ROM Library'
- Resources for downloading and creating Hog Library files can be found at www.flyingpig.com. Click on Legacy Controllers, then Wholehog II Fixture Libraries:
 - The Full Catalogue of Library Files provides all raw library files ever made. These must be manually copied into a library disk.
 - The Library Downloader is a web utility that will create a zipped library disk for you, however only contains libraries not included in the latest ROM library.
 - The Library Generator Software is an application that allows users to create and manage new Hog fixture libraries.



ETC Fixture Libraries

- ETC call their fixture libraries “Personalities” in Express/Expression and “Templates” in Congo consoles.
- New libraries for the Eos, Ion, Congo, Congo Jr & Smartfade ML can be created directly in the console!
- Express & Expression personalities can be downloaded from www.etcconnect.com. Click on Products > Controls and select the Express or Expression from the list. In the product page is a link to Downloads.
- From there you can either download pre-made personalities or download the Express/Expression Offline application, which includes a Personality Editor.



Technical Documentation	Language	Date / Version	Size
Expression 3 / Express / Insight 3 Personalities Fixtures List	English (US)	02-2007	86Kb

Software	Language	Date / Version	Size
Expression / Insight Personalities - AC Lighting - Unverified	English (US)		3Kb
Expression / Insight Personalities - City Theatrical - Unverified	English (US)		5Kb
Expression / Insight Personalities - Clay Paky - Unverified	English (US)		6Kb
Expression / Insight Personalities - Clay Paky - Verified	English (US)		9Kb
Expression / Insight Personalities - Coemar - Unverified	English (US)		3Kb
Expression / Insight Personalities - Coemar - Verified	English (US)		9Kb
Expression / Insight Personalities - Coolux - Verified	English (US)		3Kb
Expression / Insight Personalities - ETC - Verified	English (US)		1Kb
Expression / Insight Personalities - Elation - Unverified	English (US)		3Kb
Expression / Insight Personalities - High End - Unverified	English (US)		5Kb
Expression / Insight Personalities - High End - Verified	English (US)		10Kb
Expression / Insight Personalities - Martin - Unverified	English (US)		1Kb
Expression / Insight Personalities - Martin - Verified	English (US)		12Kb
Expression / Insight Personalities - Morpheus - Unverified	English (US)		4Kb
Expression / Insight Personalities - Robe - Unverified	English (US)		4Kb
Expression / Insight Personalities - Robe - Verified	English (US)		5Kb
Expression / Insight Personalities - Rosco - Unverified	English (US)		3Kb
Expression / Insight Personalities - SGM - Unverified	English (US)		4Kb
Expression / Insight Personalities - SGM - Verified	English (US)		6Kb
Expression / Insight Personalities - Space Cannon - Verified	English (US)		3Kb
Expression / Insight Personalities - Summa - Unverified	English (US)		3Kb
Expression / Insight Personalities - Vari*Lite - Unverified	English (US)		6Kb
Expression / Insight Personalities - Vari*Lite - Verified	English (US)		13Kb
Expression / Insight Personalities - Wybron - Unverified	English (US)		0Kb
Express v3.1.0 Console Software	English (US)	3.1.0	732Kb

Off-line Software	Language	Date / Version	Size
Expression 3 / Express / Insight 3 Off-line Software v3.1.1		3.1.1	4.0Mb



In short, getting new libraries for your console is simply a matter of knowing how to use the resources available to you.

Needless to say the best time to get used to using the appropriate process is not 5 minutes before the curtain goes up.

Try downloading or creating some new libraries for your console today and you will soon discover that you are able to manage most of your own fixture requirements. Always remember that if you need further assistance the team at JANDS are only a phone call away.